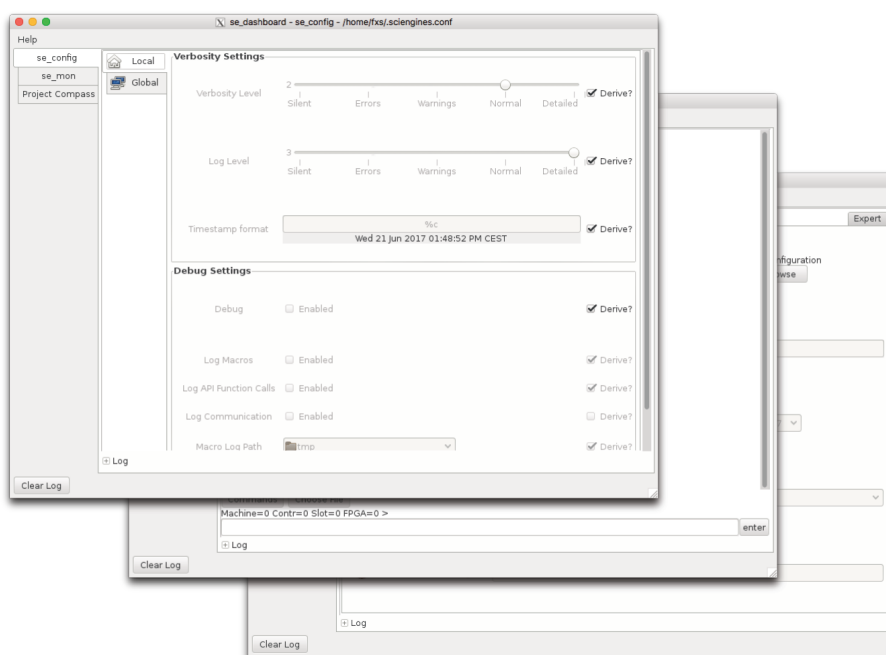


# SciEngines se\_dashboard

## Application User Guide

1.01.24



June 21, 2017

Released version



# SciEngines se\_dashboard

Application User Guide  
1.01.24

SciEngines GmbH  
Am Kiel-Kanal 2  
24106 Kiel  
Germany

Public

Released version

**Disclaimer:** Any information contained in this document is confidential, and only intended for reception and use by the company or authority who bought a SciEngines product. Drawings, pictures, illustrations and estimations are nonbinding and for illustration purposes only. If you are not the intended recipient, please return the document to the sender and delete any copies afterwards. In this case any copying, forwarding, printing, disclosure and use is strictly prohibited. The information in this document is provided for use with SciEngines GmbH ('SciEngines') products. No license, express or implied, to any intellectual property associated with this document or such products is granted by this document. All products described in this document whose name is prefaced by 'COPACOBANA', 'RIVYERA', 'SciEngines' or 'SciEngines enhanced' ('SciEngines products') are owned by SciEngines GmbH (or those companies that have licensed technology to SciEngines) and are protected by trade secrets, copyrights or other industrial property rights. Products described in this document may still be subject to enhancements and further developments. Therefore SciEngines reserves the right to change this document at any time without prior notice. Although all data reported have been carefully checked before publishing, SciEngines GmbH is not liable for any error or missing information. Your purchase, license and/or use of SciEngines products shall be subject to SciEngines' then current sales terms and conditions.

**Trademarks:**

The following are trademarks of SciEngines GmbH in the EU, the USA and other countries:

- SciEngines,
- SciEngines - Massively Parallel Computing,
- COPACOBANA,
- RIVYERA

Trademarks of other companies:

- Xilinx, Kintex and Vivado are registered trademarks of Xilinx Inc. in the USA and other countries.
- All other trademarks mentioned in this document are the property of their respective owners.

# Contents

<b>1</b>	<b>General Information.....</b>	<b>1</b>
1.1	Overview.....	1
1.2	Scope.....	1
<b>2</b>	<b>Getting started using se_dashboard.....</b>	<b>2</b>
2.1	Prerequisites.....	2
2.2	Launching the se_dashboard GUI.....	2
<b>3</b>	<b>Layout of se_dashboard.....</b>	<b>3</b>
3.1	Log.....	3
<b>4</b>	<b>Plugins.....</b>	<b>4</b>
4.0.1	<i>se_projectCompass</i> .....	4
4.0.2	<i>se_config</i> .....	6
4.0.3	<i>se_mon</i> .....	7



# 1 General Information

## 1.1 Overview

This guide introduces the features of the SciEngines *se\_dashboard* application.

The *dashboard* is combining many features of the command line tools provided by SciEngines into a powerful and easy to use graphical user interface (GUI).

## 1.2 Scope

The *se\_dashboard Application User Guide* gives a general overview of the *dashboard's* features and steps through the plugins.

## 2 Getting started using `se_dashboard`

### 2.1 Prerequisites

Before using `se_dashboard`, the FPGA cluster should be ready for use. Please refer to the *SciEngines RIVYERA User Guide* to perform all steps needed to prepare the machine for operation.

### 2.2 Launching the `se_dashboard` GUI

To use `se_dashboard`, the user has to be logged into the RIVYERA Computer.

Exucuting `se_dashboard` from the command line launches the *dashboard*. The executable is usually installed to `/opt/sciengines/current/bin/` and is accessible from any working directory via symlinks to `/bin`.

Plugins are usually stored within the `/opt/sciengines/current/lib/se_dashboa`  
`rd/plugins/` directory. See [Plugins](#) for more information.

Figure 1 shows the main view, that appears when running `se_dashboard`.



### 3 Layout of se\_dashboard

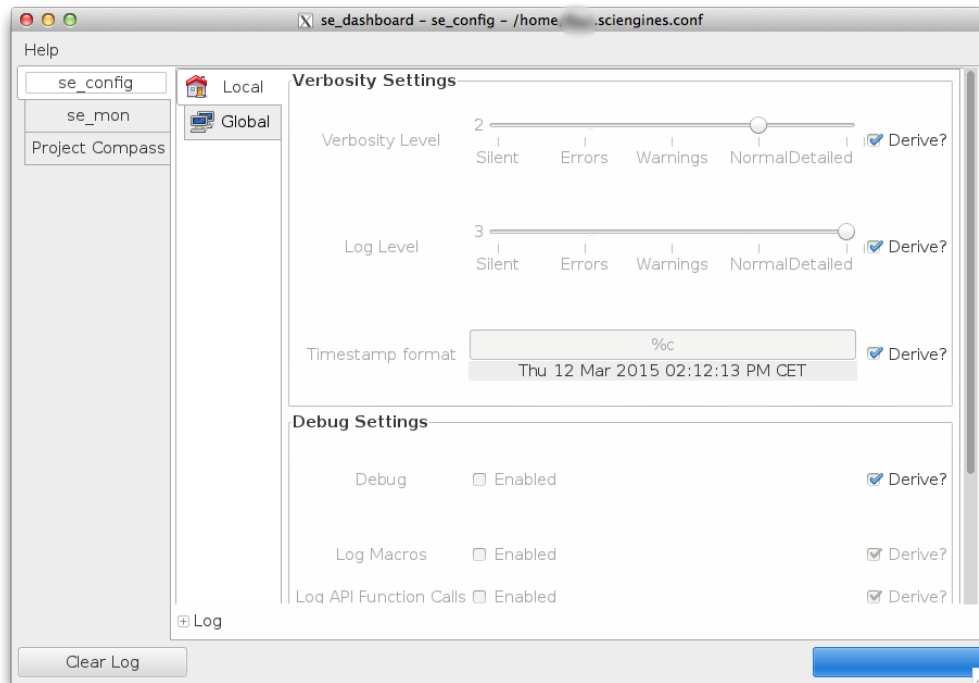


Figure 1. Main View with the se\_mon Plugin loaded

The GUI of the *dashboard* is divided into three sections.

On the left is a list of every registered plugin. Selecting one will load a specialized view on the right. Each is described in its respective section (see Plugins).

The arrangement of the plugins in the list depends on the order in which the filesystem finds them. It could therefore change from run to run.

At the bottom, a log and a status field is located. These provide information about the last or ongoing actions of the currently selected plugin. See section 3.1 for more information about the log functionality.

#### 3.1 Log

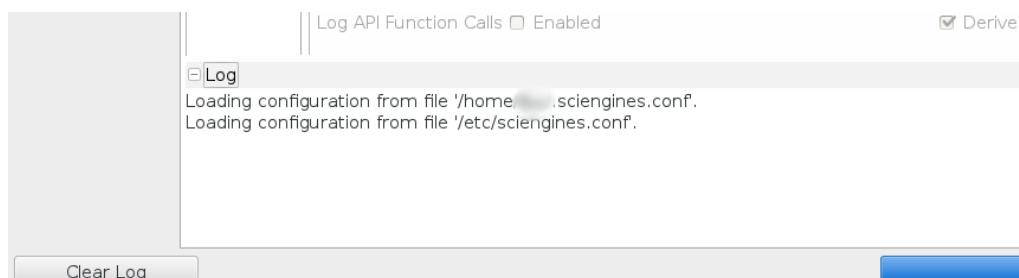


Figure 2. se\_dashboard Log

Each plugin manages its own log. Selecting a different plugin will change the content. It can be extended and collapsed by clicking on the label at the bottom (see figure 2).

Clicking the button `Clear Log` will clear the displayed log. All log messages displayed so far will be deleted. This is not reversible.

## 4 Plugins

Plugins are dynamically loaded during the start of *se\_dashboard*. Therefore, it is possible to add new plugins without updating or changing *se\_dashboard* itself. Simply restarting the application is enough.

### 4.0.1 *se\_projectCompass*

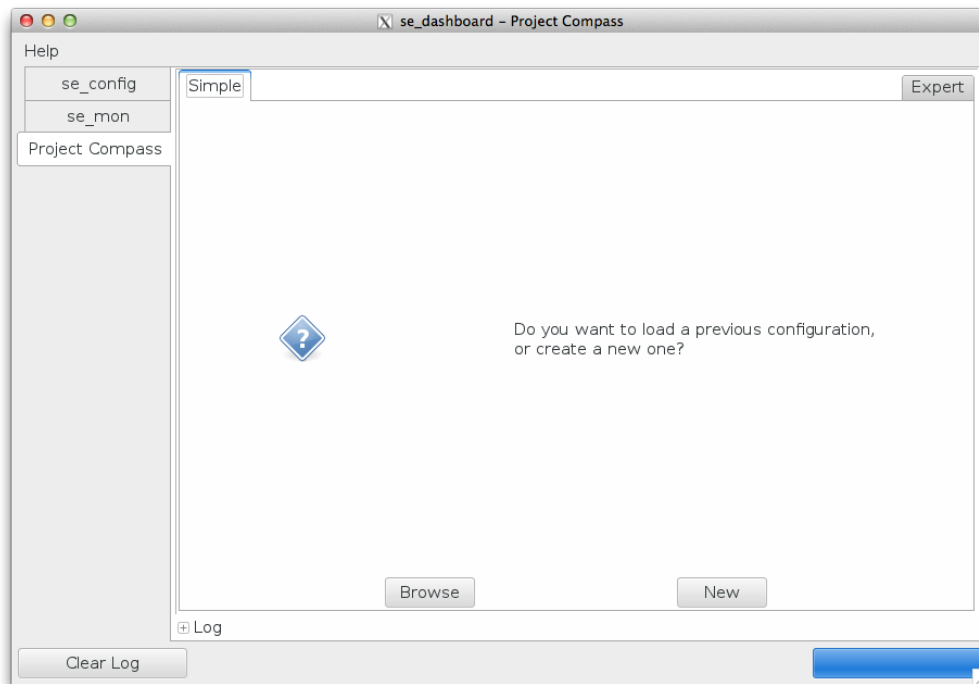


Figure 3. *se\_projectCompass* Plugin

### Overview

*se\_projectCompass* is SciEngines' solution for creating whole FPGA and Host source code projects for the RIVYERA. It is capable of generating both the ISE and Eclipse project with all necessary files, as well as demo projects to illustrate the operation of the SciEngines API and the machine.

### Usage

The *se\_projectCompass* features two modes of creation, *Simple* and *Expert*.

The *Simple* mode (figure 4) allows to either load a previous configuration or to create a new one.

By clicking the *New* button, *se\_projectCompass* switches its layout to a list of easy steps that guide the creation a full project.

Selecting to *Browse* in either view will open a file browser. It allows to select any configuration file which was earlier created by the *se\_projectCompass*. Upon finishing the dialog, all fields are automatically filled with the appropriate data.

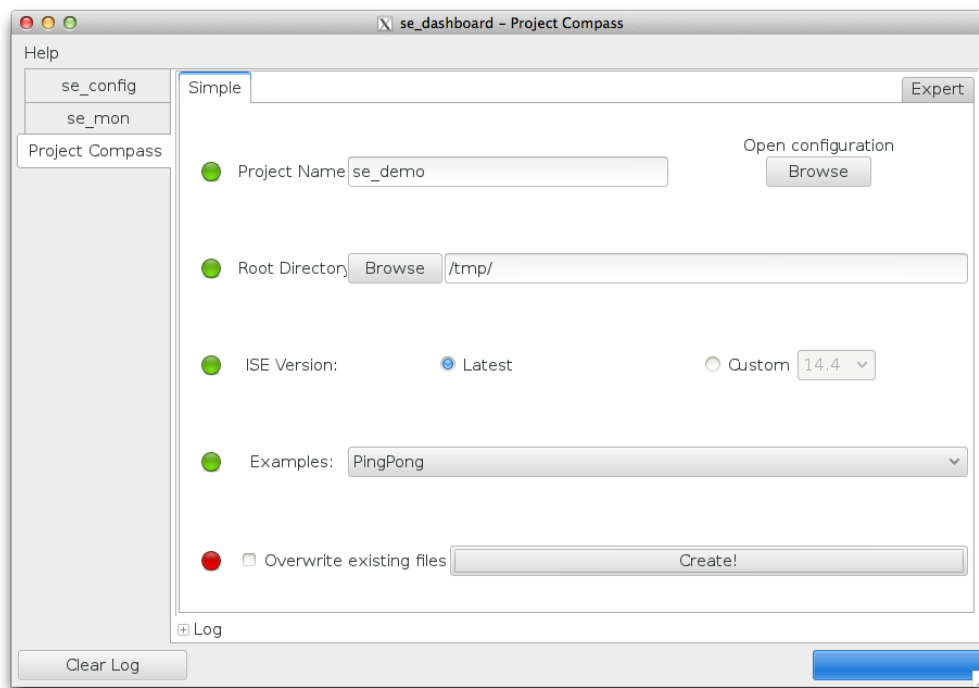


Figure 4. se\_projectCompass Simple View

The *Expert* tab (figure 5) provides more options. All options are immediately available. If an option is set in the *Simple* view, its corresponding setting is also altered in the *Expert* view.

Reload from will open a dialog to choose a preexisting configuration file akin to the Browse button in the *Simple* view. Reload will discard all current changes to the loaded file and revert back to its original state. If none was loaded, se\_projectCompass will go back to the defaults.

When an example is selected, certain parts of the generated files are filled or exchanged with demonstrational, yet functional code.

Clicking Create will check all inputs and, if all are valid, create the new project at the specified path. If Overwrite existing projects was checked, all previous files with the same name will be overwritten. Differently named files will be kept as they were.

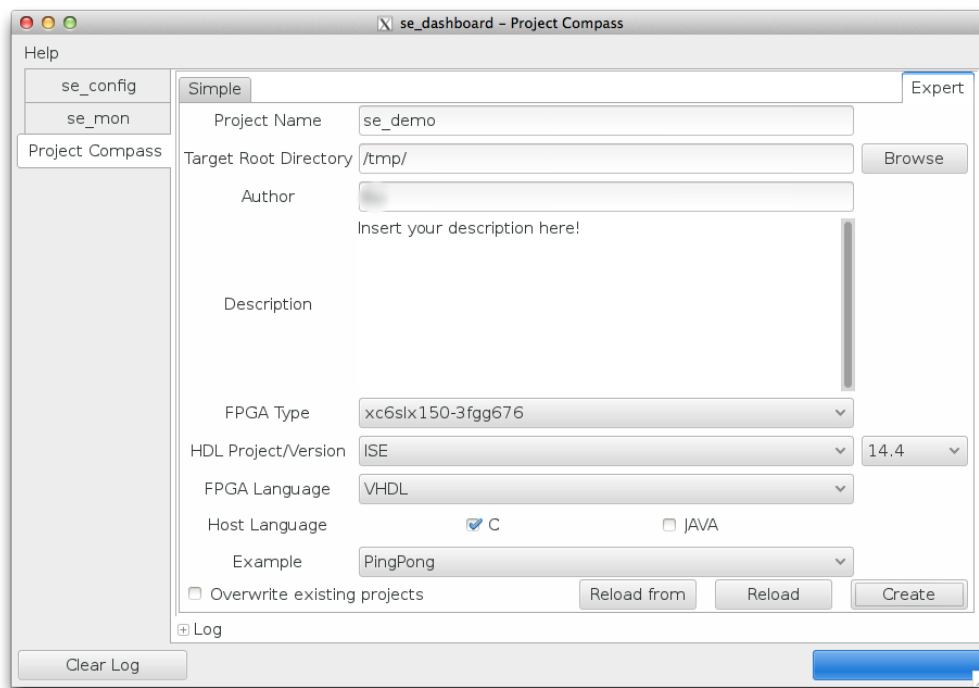


Figure 5. se\_projectCompass Expert View

#### 4.0.2 se\_config

##### Overview

The *se\_config* plugin manages the SciEngines local configuration files of the user and, if opened by an admin, the global ones for the entire system.

The local settings deal with the verbosity and logging behavior of API calls, while the global settings provide the default content as well as additional, administrative settings.

See the *SciEngines RIVYERA User Guide* for more information.

##### Usage

The local settings can be derived. In this context that means, the local option is replaced by the global setting. To change this behaviour for one option, uncheck the box next to it. If checked, the displayed value is the default configuration set by the global settings.

The global tab (figure 7) displays the defaults for the local configuration as well as additional, administrative settings.

Clicking the *Apply* button will save the currently opened tab but not the other one. Likewise, *Discard* reloads the currently opened page without affecting the other.

The *Timestamp format* follows the `strftime()` C-function. For more information about the possible tokens, see the manpage for `strftime()`. This can be displayed by executing `man strftime`.

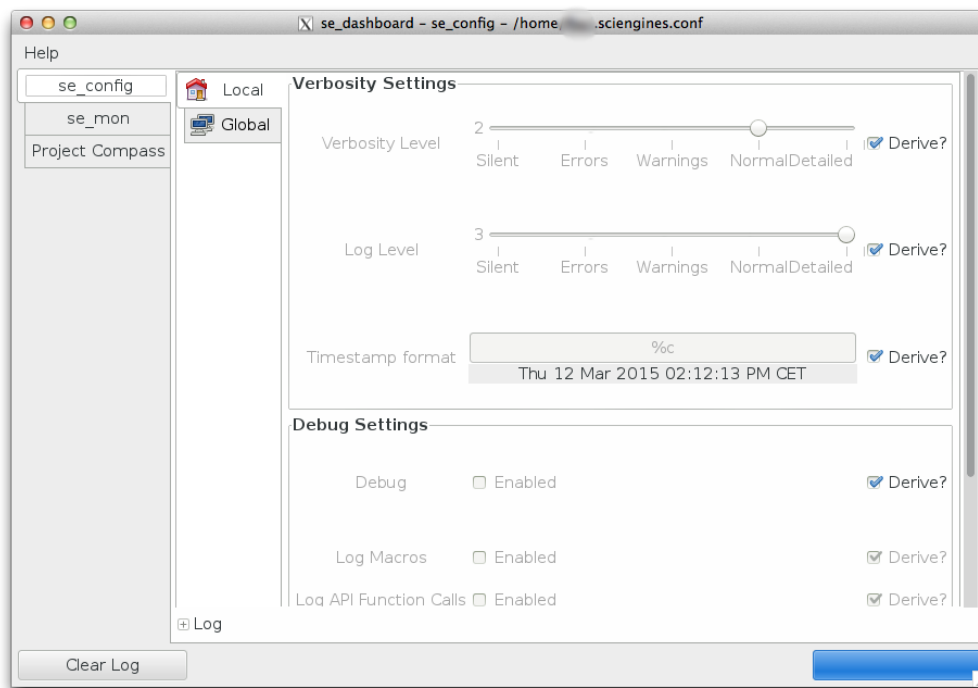


Figure 6. se\_config Plugin

### 4.0.3 se\_mon

The *se\_mon* plugin provides a GUI for the *se\_mon* command line tool. Its functionality is mostly identical and differs only in the supply of alternative, user-friendly ways to interact with the machine interface.

For more information about *se\_mon* and its features in particular, refer to *se\_mon\_ug*.

### Overview

The plugin's view is arranged in two sections. The text view at the top, and the command area at the bottom.

The former displays the interaction of the user and the machine. User input is shown in bold and italic. Regular output is black, while errors are displayed in red.

The command area is used to control the *se\_mon* backend. It provides a regular text entry which accepts arbitrary text and a button to choose from a list of commands.

Above the text-entry, the currently selected machine and FPGA address is displayed. Refer to the *SciEngines RIVYERA User Guide* for more information regarding machine and FPGA addresses.

### Usage

Using the *se\_mon* plugin is easy.

Clicking on the **Commands** button reveals a list of all available commands. These are identical to their command line counter parts.

To receive additional information about a command, type `help` followed by the name of it.

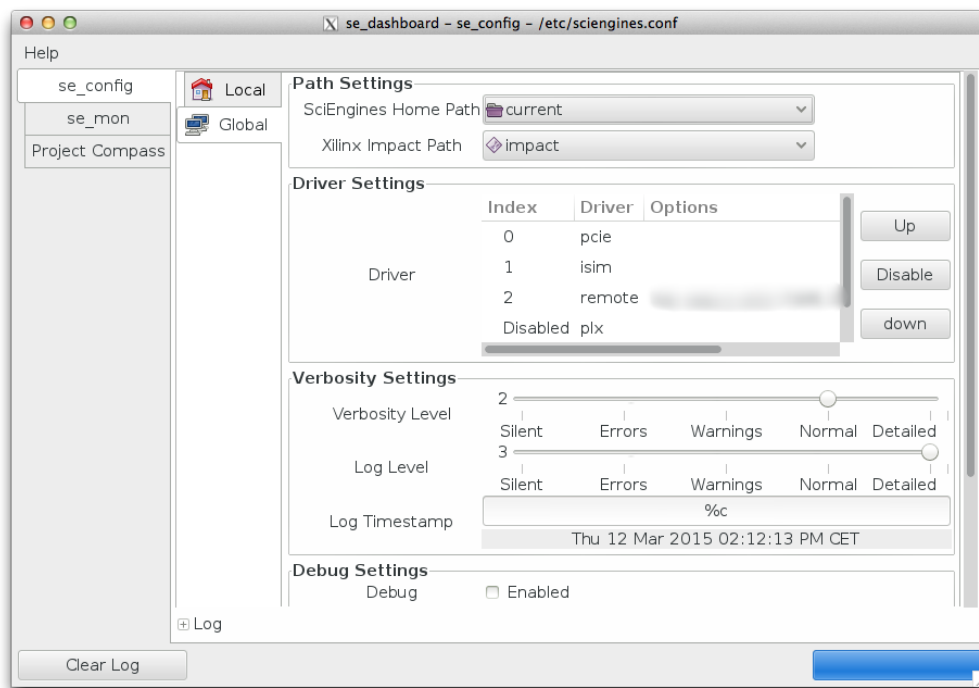


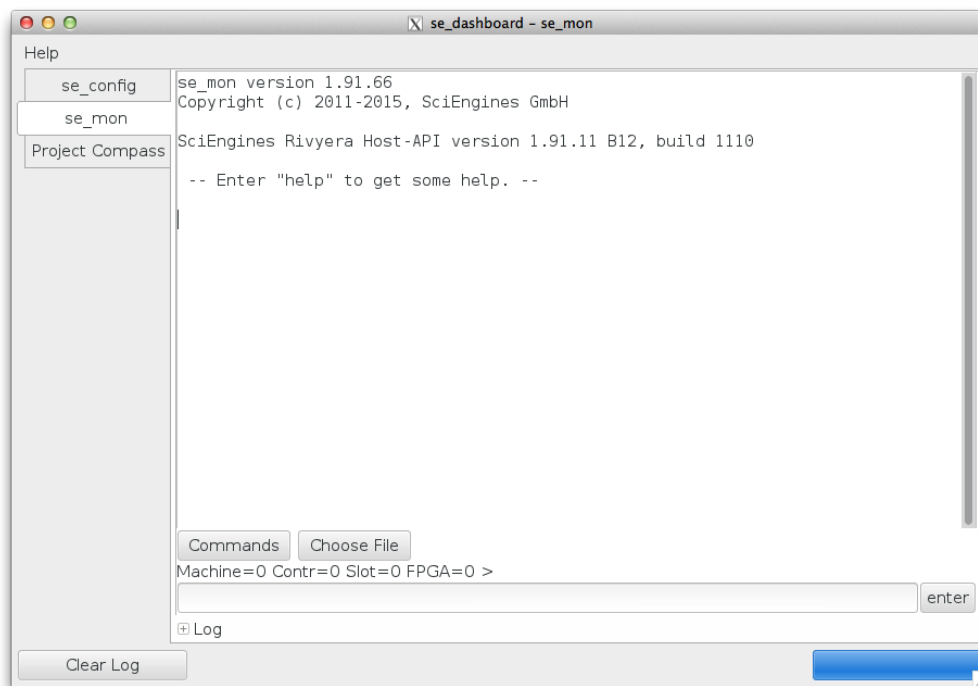
Figure 7. se\_config Global Tab

A command is issued when either the button labeled `enter` is clicked or the return key of the keyboard is pressed. The entered command is shown in the text view followed by the output of `se_mon`.

Some commands like `program` require a path to a file. Clicking the button `Choose File` opens a dialog that allows to retrieve the path of a file with ease. After selecting a file through the dialog, its path is appended to the command prompt.

The text-entry is capable of completion. As a prompt is entered, a list of potential commands is shown below. Select one by clicking on it. The text is then automatically completed in the command line.

Even though aliases are not offered for neither autocompletion nor the command list, they are still accepted as commands. E.g. it is legitimate to enter the prompt `help program` as `h p`.

**Figure 8. se\_mon Plugin**

# Index

GUI, 1

Log, 3

Machine Configuration, 6

Plugin, 4

Project Compass, 4

Requirements, 2

se\_config, 6

se\_mon, 7

se\_projectCompass, 4

Settings, 6





## **Imprint:**

SciEnginesGmbH  
Am Kiel-Kanal 2  
D-24106 Kiel Germany

Phone:	+49(0)431-9086-2000
Fax:	+49(0)431-9086-2009
E-Mail:	<a href="mailto:info@SciEngines.com">info@SciEngines.com</a>
Internet:	<a href="http://www.SciEngines.com">www.SciEngines.com</a>

CEO:	Gerd Pfeiffer
------	---------------

Commercial Register:	Amtsgericht Kiel
Commercial Register No.:	HR B 9565 KI
VAT-Identification Number:	DE 814955925